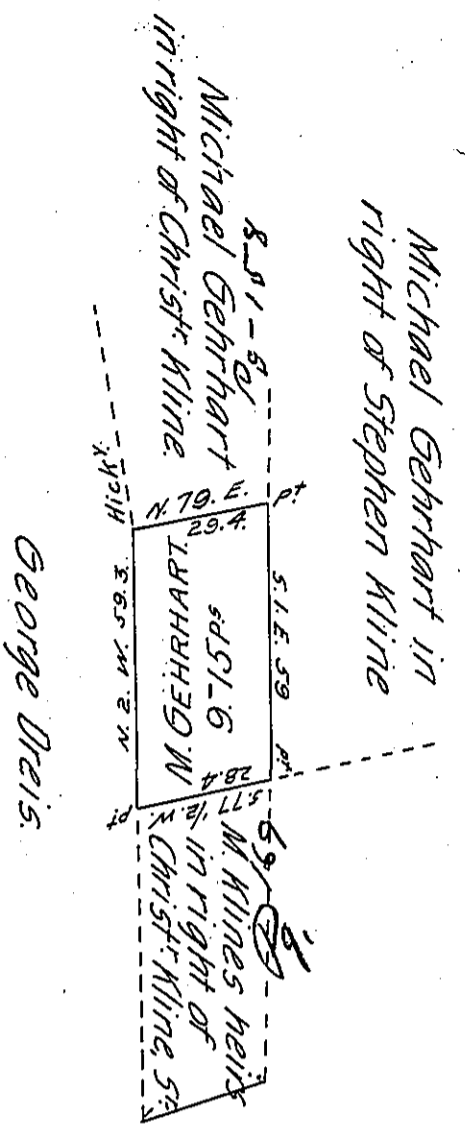


See page 169



Situate in Beaver township, Union County, Surveyed the 28th day of December A. Dom. 1828 for Michael Gehrhart, Containing Nine Acres and fifteen perches with the Usual Allowance of Six $\frac{1}{2}$ C^t.

The same being part of a Survey or tract of land Surveyed the 25th day of May A. Dom. 1815 $\frac{1}{2}$ Simon Snyder, Esq^r then Deputy Surveyor, for Christopher Kline, Sen^r in pursuance of his Warrant Dated the 9th day of August A. Dom. 1814.

$\frac{1}{2}$ Jn^o Hayes, D. S.

To Gabriel Hiester, Esq^r }
 Surveyor General Penn^a }

IN TESTIMONY that the above is a copy of the original remaining on file in the Department of Internal Affairs of Pennsylvania, made conformably to an Act of Assembly approved the 16th day of February, 1833, I have hereunto set my Hand and caused the Seal of said Department to be affixed at Harrisburg, this second day of August 1905.

Geo. P. Perry
 Secretary of Internal Affairs.